

© 1966 BY AMP INCORPORATED. ALL RIGHTS RESERVED. AMP PRODUCTS COVERED BY PATENTS AND/OR PATENT PENDING.

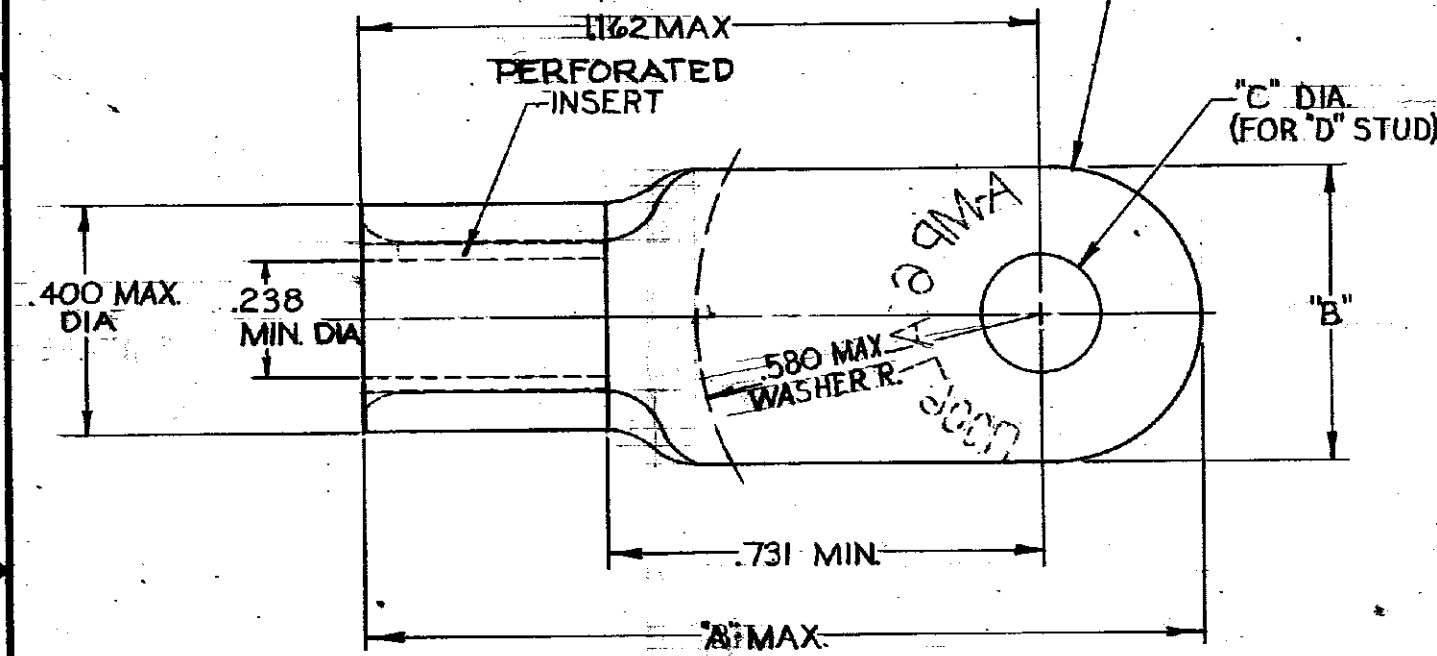
Unauthorized reproduction or use of this drawing without written permission of AMP INCORPORATED is prohibited.

NUMBER 50719

S

C

B



ZONE	LTR	DESCRIPTION	DATE	APPROVED
	O	PER NPS 66-1760-1764	11-15-66	ST
	A	REMOVED ENGRG CONT PER REV NPS 66-1760-1764	7/10/67	RHW
	B	REV TITLE PER ECN PC-5545	12-6-68	RHW
	C	ADDED 50719-5 NPS 69-0554	12-16-69	Jme
	D	ADDED 50719-6 NPS 75-1756	6-17-75	Jwa
	E	REVISED PER G-1651	11/16/82	ppm
	F	OBSOLETE - 4 #6 G-2508	7/23/87	ppm
	G	OBS - 5 PER S-2856	8/3/88	ppm

MANUFACTURED BY CONTROLLED

TABLE I

WIRE TERMINAL	SEE TABLE II	INSERT: BRASS (MIL-C-50) TIN PL (MIL-T-10727) TYPE I .0003 MIN THK	
		BODY: COPPER (QQ-C-576) TIN PL (MIL-T-10727) TYPE I	
QTY.	DESCRIPTION	PART NO.	MATERIAL & FINISH
	UNLESS OTHERWISE SPECIFIED DIM. ARE IN INCHES. TOLERANCES ON: DECIMALS ±.003 ANGLES ±5°	CONTRACT NO. #	<b>AMP</b> AMP INCORPORATED HARRISBURG, PENNSYLVANIA
	MATERIAL SEE TABLE I	DR <i>AC. Youngblood</i> 11-11-66	NAME WIRE TERMINAL
		CHK <i>Swabell</i> 11-15-66	COPALUM-STRANDED/SOLID WIRE SIZE: #6
		APPR <i>Swabell</i> 11-16-66	SIZE B CODE IDENT NO. 00779 NUMBER 50719
		DSGN APPD	SCALE 4:1 WT CALC ACTUAL SHEET 1 OF 1
		OTHER APPD	
	HEAT TREAT #		
	FINISH SEE TABLE I		

PART NO.	"A"	"B"	"C"	"D"	
<del>50719-6</del>	<del>1.504</del>	<del>.679</del>	<del>.515</del>	<del>1/2</del>	<del>OBSOLETE</del>
50719-5	1.415	.500	.145 ±.003	6	OBSOLETE
<del>50719-4</del>			<del>.453 ±.005</del>	<del>7/16</del>	<del>OBSOLETE</del>
50719-3	1.504	.679	.390 ±.005	3/8	
50719-2			.328 ±.005	5/16	
50719-1			.265 ±.005	1/4	
50719	1.415	.500	.197 ±.003	10	
PART NO.	"A"	"B"	"C"	"D"	

AMP INFO  
LOC 86